



## Curtis Road, Hemel Hempstead, HP3 8LE

### £1,800 PCM

Clements Estate Agents are delighted to market this excellently presented, TWO bedroom, semi-detached house, in this ever popular, Levestock Green location. The property is located in a quiet cul-de-sac a stones throw away from all local amenities, including local pubs and large green spaces. Comprising of a NEWLY fitted kitchen, spacious living room and convenient downstairs WC. Perfect for couples or small families, this home also boasts TWO spacious bedrooms and a large family bathroom. The standout features of this property are however located externally, being the larger than usual garden and driveway parking for several cars. Available NOW! Call to view!



**Kitchen 11'5" x 8'10" (3.48 x 2.70)**



**WC / Shower room 7'7" x 2'11" (2.31m x 0.89m)**



**Utility 4'11" x 4'6" (1.52m x 1.39m)**



**Bedroom 2 11'5" x 8'11" (3.49 x 2.72 )**



**Lounge 15'1" x 12'10" (4.61 x 3.92)**



**Bedroom 1 12'11" x 11'5" (3.94 x 3.49)**



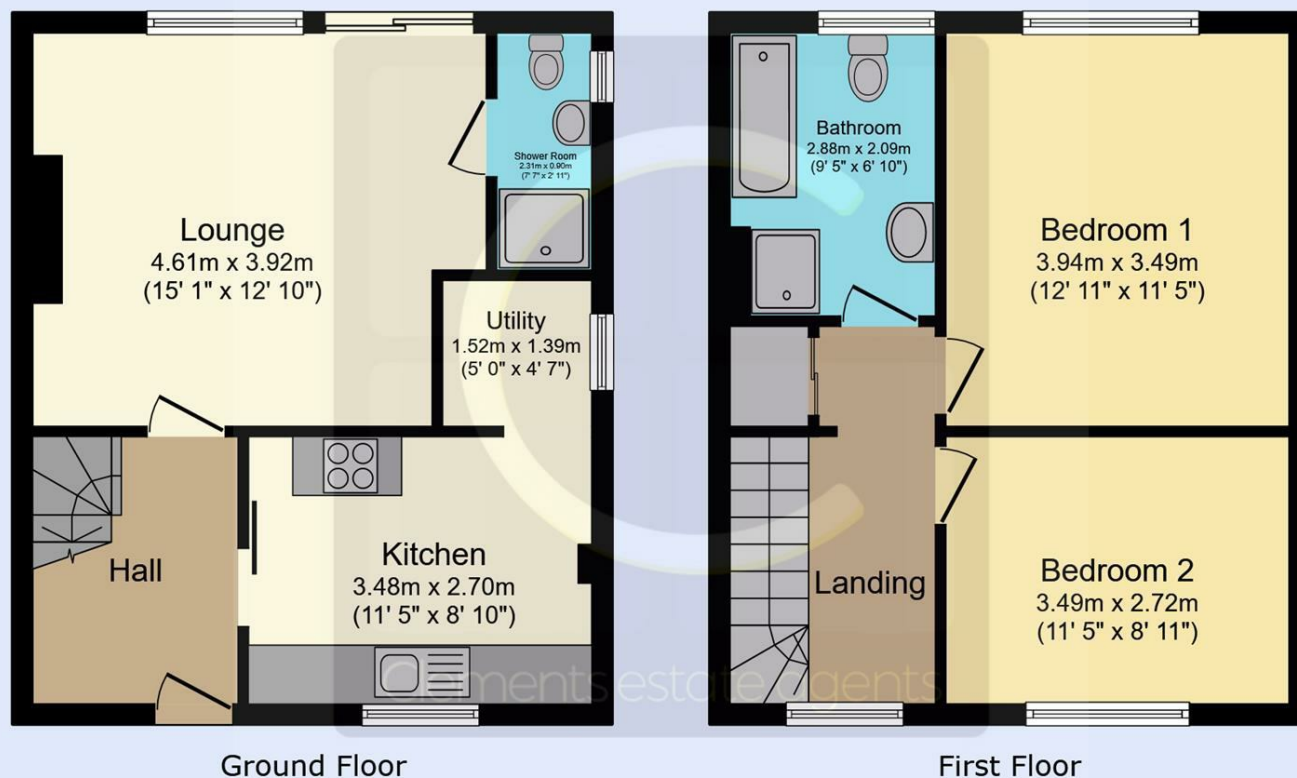
**Bathroom 9'5" x 6'10" (2.88 x 2.09)**



**Garden**



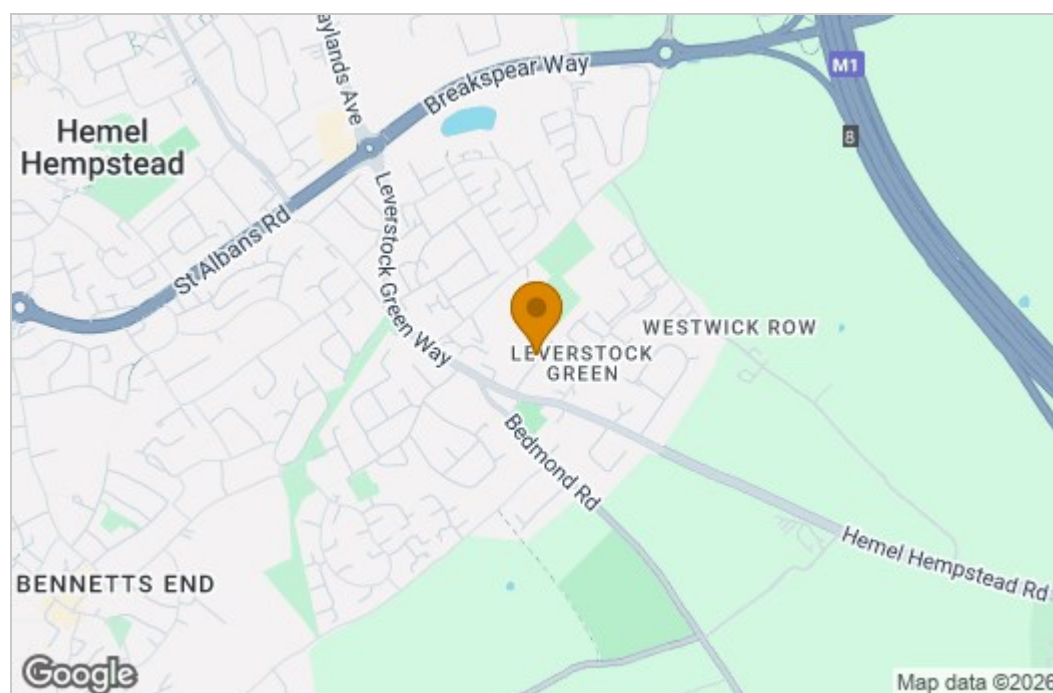
## Floor Plan



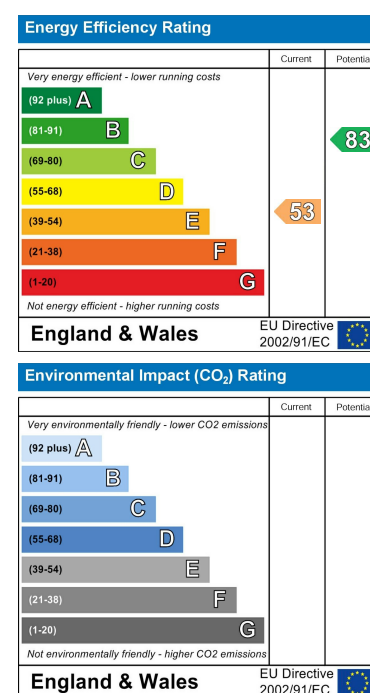
This floor plan is for illustrative purposes only. It is not drawn to scale. Any measurements, floor areas (including any total floor area), openings and orientations are approximate. No details are guaranteed, they cannot be relied upon for any purpose and do not form any part of any agreement. No liability is taken for any error, omission or misstatement. A party must rely upon its own inspection(s). Powered by [www.Propertybox.io](http://www.Propertybox.io)

Clements  
estate agents

## Area Map



### Energy Efficiency Graph



These particulars, whilst believed to be accurate are set out as a general outline only for guidance and do not constitute any part of an offer or contract. Intending purchasers should not rely on them as statements of representation of fact, but must satisfy themselves by inspection or otherwise as to their accuracy. No person in this firm's employment has the authority to make or give any representation or warranty in respect of the property.

45 Marlowes, Hemel Hempstead, Hertfordshire, HP1 1LD  
Tel: 01442 214151 Email: [lettings@clementsestateagents.co.uk](mailto:lettings@clementsestateagents.co.uk) <https://www.clementsestateagents.co.uk>